


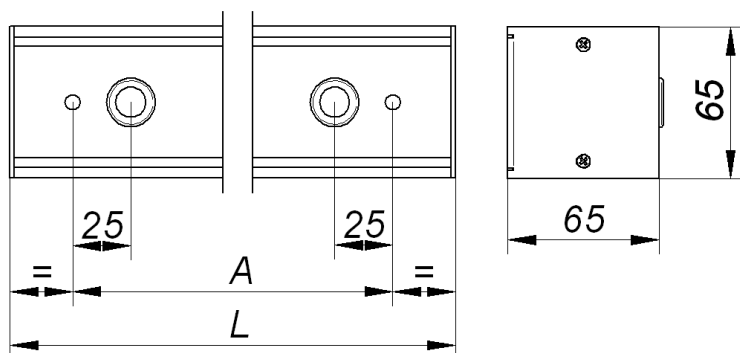
Installation manual  
**ASYMMETRIC LED**      



230V/50Hz

1. Dimensions:

Power [W]	L [mm]	A [mm]	Weight [kg]
30	1260	1206	2,7
37	1540	1486	3,4
44	1820	1766	4,0
51	2100	2046	4,6



2. Installation:

- Turn off the power at the circuit to which is to be connected luminaire as in Fig.1.
- Remove the luminaire from the package.
- Remove the end caps as in Fig.2.
- Run the cable through the gland as in Fig.3. take notice to the direction of asymmetry as in Fig.4.
- Tighten the mounted to the ceiling as in Fig.5. (move the plate so as not to interfere when assembly as Fig.6.
- Plug the power cord according to with markings as in Fig.7.
- Install the end caps as in Fig.2.



Fig.1.

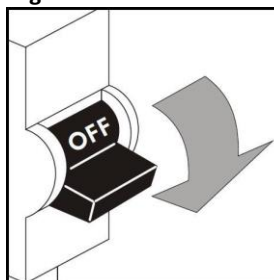


Fig.2.

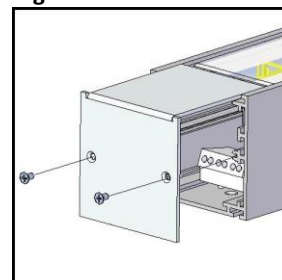


Fig.3.

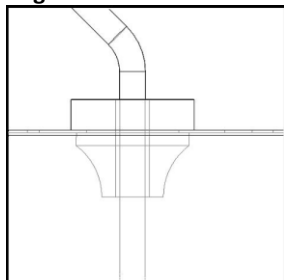


Fig.4.

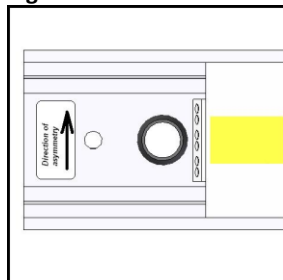


Fig.5.

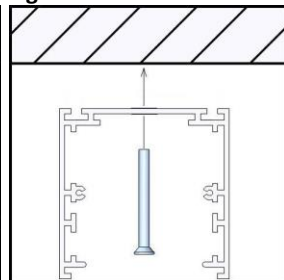


Fig.6.

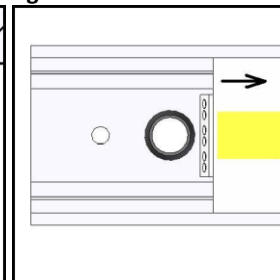
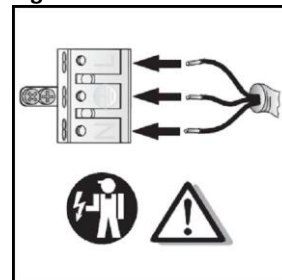


Fig.7.



3. Important warnings:

The manufacturer cannot be considered liable for any damages deriving from improper, wrong and unreasonable use of the fitting.

Luminaries may be installed by qualified personnel only.

Any manipulation inside the luminaire when power supply is on causes the risk of electric shock.

Manufacturer is not responsible for any flaws caused by avoid using this manual.

Manufacturer reserves a right to change the construction of the product.



The European Directive 2002/96/EC on waste electrical and electronic equipment, requires that electric and electronic devices must be disposed of in the normal household waste. The crossed out wheeled bin is reproduced in order to remember obligations towards separately collection. For correct disposal, please use authorized waste disposal facilities or returned to the distributor at the date a new lighting fitting is purchased. Lamps, if disposed together with the lighting fitting, shall not be broken up since they contain substances which are highly polluting for the environment. Unauthorized disposal of the foregoing waste material is punishable by law.

