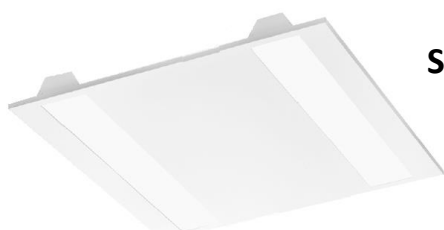


Installation manual
SUN LED / SUN LED NT / SUN LED GK



220-240V/50-60Hz

1. Dimensions:

b) SUN LED

Power [W]	A [mm]	B [mm]	H [mm]	Weight [kg]
31	596	596	47	4,3
31	1196	296	47	4,4

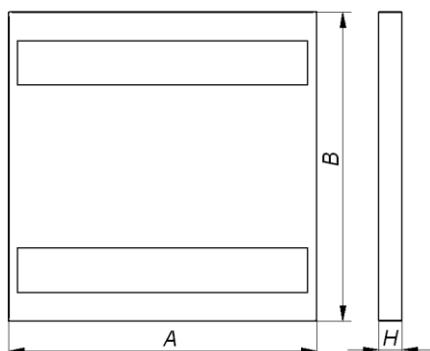
a) SUN LED NT

Power [W]	A [mm]	B [mm]	C [mm]	D [mm]	E [mm]	F [mm]	Weight [kg]
31	623	623	520	520	495	311,5	7,4
31	1225	300	1122	197	537,5	261	7,4

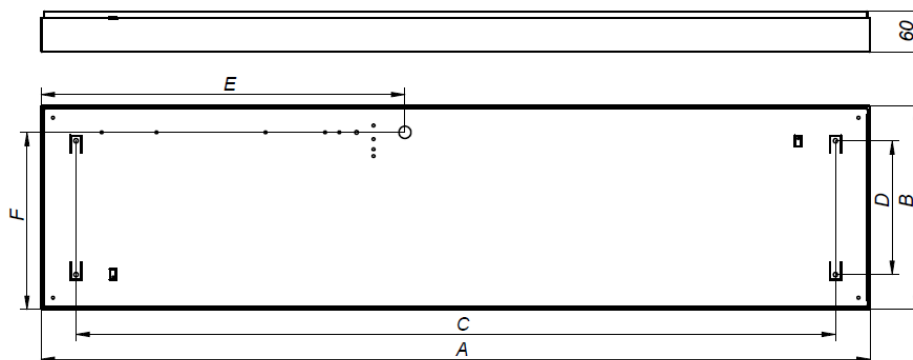
c) SUN LED GK

Power [W]	A [mm]	B [mm]	H [mm]	Installation cut-out [mm]	Weight [kg]
31	621	621	57	600x600	5,0
31	1245	310	57	1200x285	5,3

SUN LED / SUN LED GK

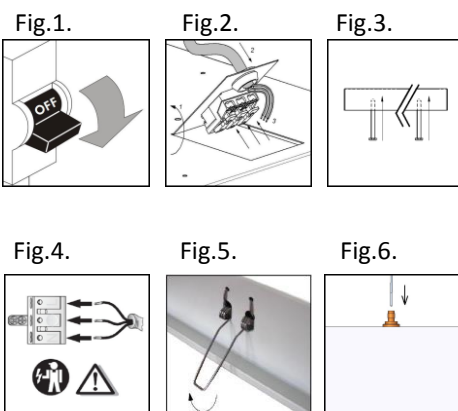


SUN LED NT



2. Installation:

- Turn off the power in the circuit Fig.1.
- Carefully remove luminaire from the package.
- Pull the flap with the connector back (suspended and coffer panel version / GK) and pull the power cable (all versions) through the hole on the back as in Fig.2.
- Remove the frame – **WARNING** – frame is fixed with magnets, in order to remove it jerk it firmly and unhook the carabiners (only NT version).
- Install the luminaire using four screws as in Fig.3.
- Connect the power supply accordingly to the markings on the connector as in Fig.4.
- Put the luminaire into the ceiling (coffer panels version /GK) Fig.5.
- Tighten the wire regulators (suspended version) as in Fig.6.
- Fasten the carabiners again and attach the frame to the magnets in the base (NT version).



3. Important warnings:

The manufacturer cannot be considered liable for any damages deriving from improper, wrong and unreasonable use of the fitting. Luminaries may be installed by qualified personnel only. Any manipulation inside the luminaire when power supply is on causes the risk of electric shock. Manufacturer is not responsible for any flaws caused by avoid using this manual. Manufacturer reserves a right to change the construction of the product. Do not assembly in places without air circulation. To guarantee safety of luminaire functions, please assembly according to instruction.



The European Directive 2002/96/EC on waste electrical and electronic equipment, requires that electric and electronic devices must be disposed of in the normal household waste. The crossed out wheeled bin is reproduced in order to remember obligations towards separately collection. For correct disposal, please use authorized waste disposal facilities or returned to the distributor at the date a new lighting fitting is purchased. Lamps, if disposed together with the lighting fitting, shall not be broken up since they contain substances which are highly polluting for the environment. Unauthorized disposal of the foregoing waste material is punishable by law. More details of directive available at: <http://www.gios.gov.pl>

