

CE **TORINO**

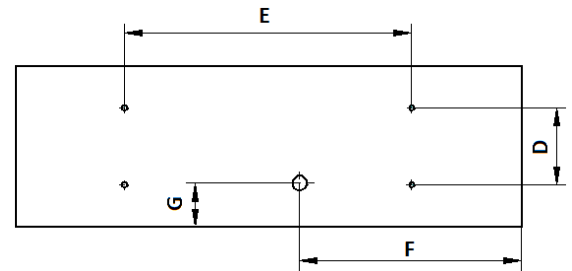
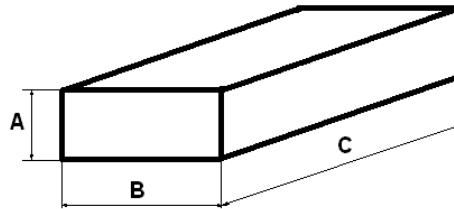


IP20



Assembly instruction

Torino AS



220-240V/50-60Hz T5, LED

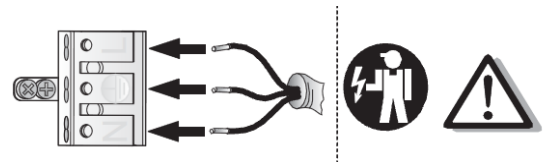
1. Dimensions and weight

Power[W]	A	B	C	Weight (kg)
1x14/24	80	172	623	2,5
1x21/39	80	172	923	2,9
1x28/54	80	172	1233	3,4
1x35/49/80	80	172	1533	3,9
LED 17	80	172	610	1,8
LED 32	80	172	1170	3,4

Power[W]	D	E	F	G
1x14/24	79	417	168	37
1x21/39	79	717	318	37
1x28/54	79	1027	468	37
1x35/49/80	79	1327	618	37
LED 17	79	480	477	33
LED 32	79	950	732	33

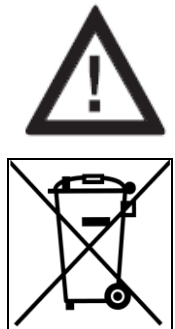
2. Assembly

- remove carefully fixture from packaging and put on safety place (table or floor)
- pull out the louver
- power connection
 - take power wire through dedicated hole in fixture's base
 - connect cables according to signs at power cube
- ceiling mounting:
 - fixture is to be mounted on ceiling with four holes of 7mm diameter
- fluorescent lamp mounting (not applicable to version led)
 - put fluorescent lamp with appropriate power in the fixture and gently pressure into fixture.
 - rotate fluorescent lamp 90°
- place the louver



3. Important warnings:

- the manufacturer cannot be considered liable for any damages deriving from improper, wrong and unreasonable use of the fitting.
- luminaries may be installed by qualified personnel only.
- any manipulation inside the luminaire when power supply is on causes the risk of electric shock.
- manufacturer is not responsible for any flaws caused by avoid using this manual.
- manufacturer reserves a right to change the construction of the product.
- do not install fixture in the area without air circulation.
- in order to keep safe and proper operating of the fixture, it is obliged to follow this instruction.



The European Directive 2002/96/EC on waste electrical and electronic equipment, requires that electric and electronic devices must be disposed of in the normal household waste. The crossed out wheeled bin is reproduced in order to remember obligations towards separately collection. For correct disposal, please use authorized waste disposal facilities or returned to the distributor at the date a new lighting fitting is purchased. Lamps, if disposed together with the lighting fitting, shall not be broken up since they contain substances which are highly polluting for the environment. Unauthorized disposal of the foregoing waste material is punishable by law. More details of directive available at: <http://www.glos.gov.pl>